

Dashboard – Real-Time Performance Visualization

When assessing your network operations, you want the information you want, when you want it, all at your fingertips. Use Telsasoft's Dashboard to monitor any measurable variable on your network in near real-time. Customize widgets and thresholds for visual cues and create KPI reports to see trends in periods of days, weeks and months.

Managed Dashboard

Telsasoft's Managed Dashboard gives you the ability to see network performance from high-level overviews to site specific issues. This dashboard is fully managed by Telsasoft to seamlessly provide you with the data you need without requiring any configuration or setup on your part.

TelsApp Dashboard

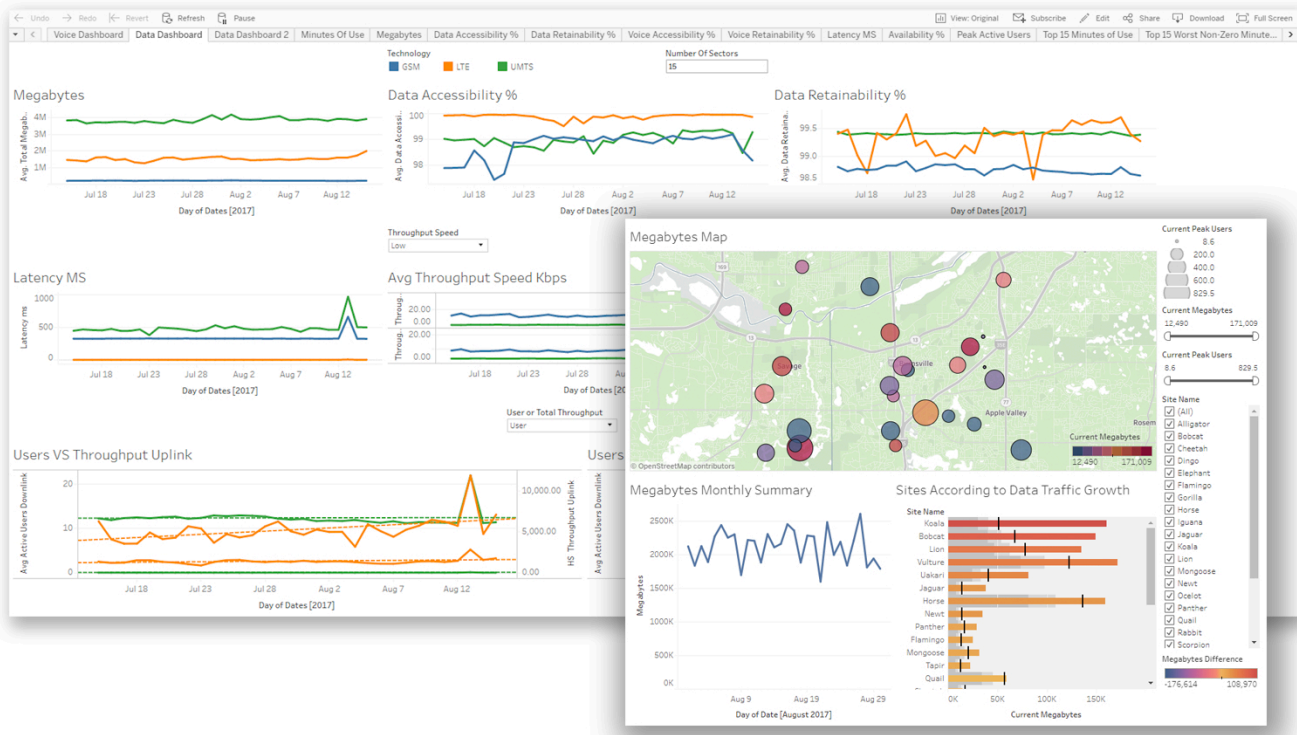
The TelsApp dashboard, allows you to convert core application modules (alarms grid, geomap, reports, ticket system, etc...) into customizable widgets. These widgets can be resized and arranged to create powerful dashboards to give you a multifaceted comprehensive view of your entire network. This dashboard is created and configured by you and gives you the most power and flexibility to create exactly what you need to view the right data, displayed conveniently, for any given device.

Features:

- Real-time visualization of your network statistics
- Accessible from any web browser (smartphones, tablets, PCs)
- Visual cues alert you when a signal crosses your customized thresholds
- Pinpoint problem site or sites by location and time of day
- Display statistics from any source in your network
- Customize settings so each operator can focus on the statistics that matter to them
- Schedule daily e-mails

Right-Data. Right-Person. Right-Time.

Managed Dashboard View vital signs of your network directly in your browser as they update. A visual cue will signal if current values are outside predefined ranges.



TelsApp Dashboard You can customize and arrange your own widgets to give a multifaceted and comprehensive view of your entire network.

